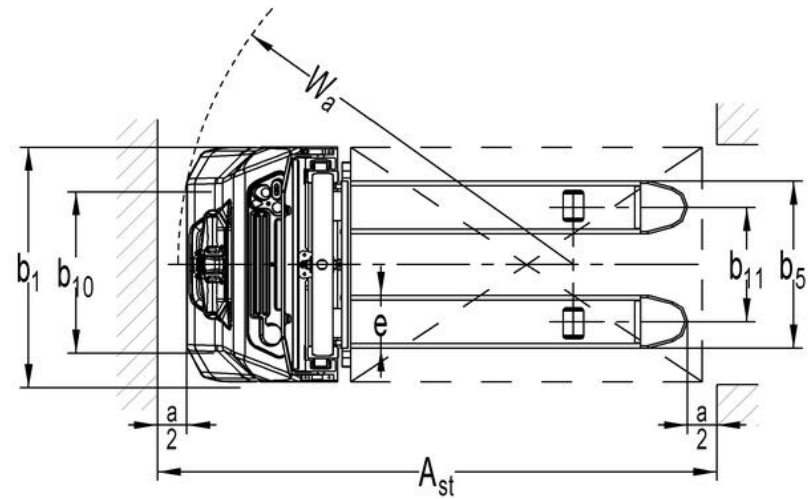
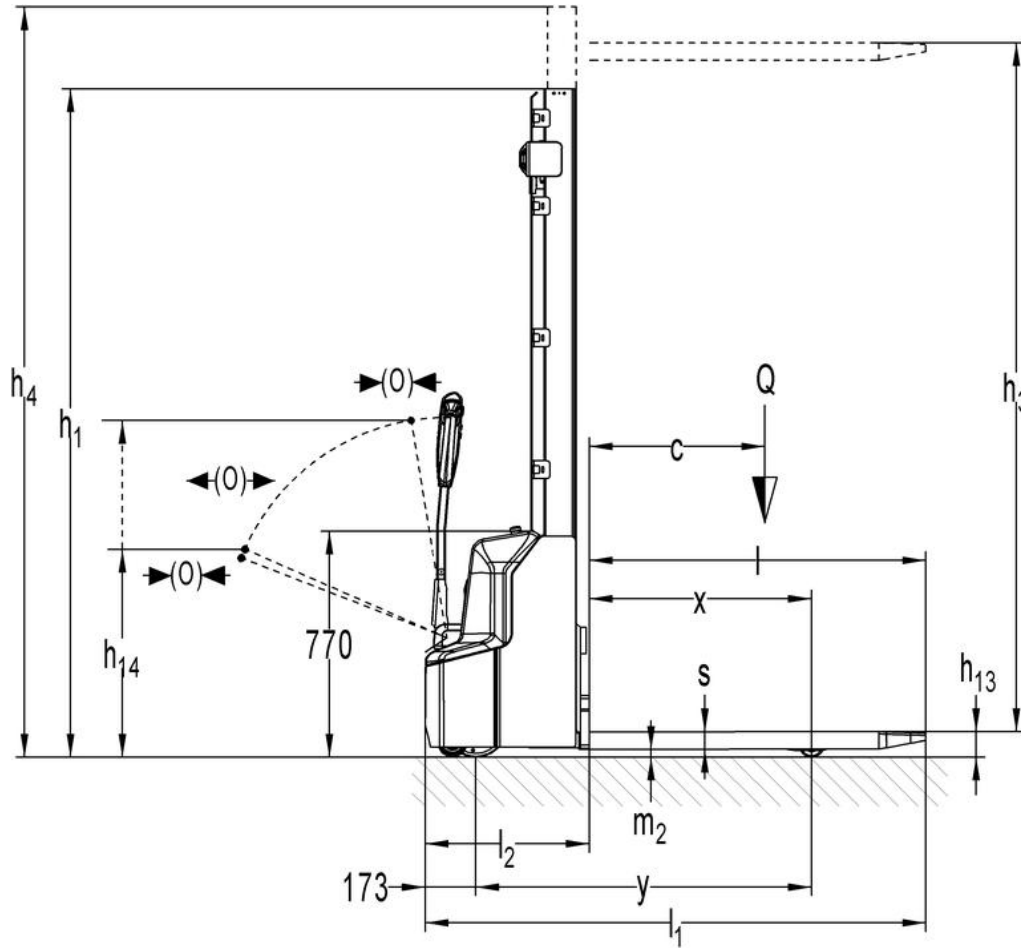


NOBLELIFT

PSE 12B/PSE 12N



NOBLELIFT

Type sheet for industrial truck acc. to VDI 2198					
Distinguishing mark	1.2	Manufacturer`s type designation		PSE 12B/PSE 12N	
				1600	3600
	1.3	Power (battery ,diesel, petrol, gas, manual)		Battery	
	1.4	Operator type		Pedestrian	
	1.5	Load Capacity / rated load	Q (t)	1.2	
	1.6	Load centre distance	c (mm)	600	
	1.8	Load distance ,centre of drive axle to fork	x (mm)	760	
	1.9	Wheelbase	y (mm)	1147	
Weight	2.1	Service weight	kg	530	650
	2.2	Axle loading, laden front/rear	kg	510 / 1220	575 / 1275
	2.3	Axle loading, unladen front/rear	kg	380 / 150	445 / 205
Tires, chassis	3.1	Tires		polyurethane	
	3.2	Tire size, front	Ø x w (mm)	Ø 210 x 70	
	3.3	Tire size, rear	Ø x w (mm)	Ø 84 x 93	
	3.4	Additional wheels(dimensions)	Ø x w (mm)	Ø 100 x 50	
	3.5	Wheels, number front/rear(x=driven wheels)		1x + 1 / 2	
	3.6	Track, front	b ₁₀ (mm)	550	
	3.7	Track, rear	b ₁₁ (mm)	400 / 515	
Dimension s	4.2	Lowered mast height	h ₁ (mm)	1950	2280
	4.3	Free Lift height	h ₂ (mm)	1514	-
	4.4	Lift height	h ₃ (mm)	1514	3514
	4.5	Extended mast height	h ₄ (mm)	1950	4037

NOBLELIFT

	4.9	Height of tiller in drive position min./ max.	h_{14} (mm)	710 / 1150
	4.15	Height, lowered	h_{13} (mm)	86
	4.19	Overall length	l_1 (mm)	1710
	4.20	Length to face of forks	l_2 (mm)	560
	4.21	Overall width	b_1 (mm)	800
	4.22	Fork dimensions	$s/e/l$ (mm)	60 / 180 / 1150
	4.25	Distance between fork-arms	b_5 (mm)	570 / 685
	4.32	Ground clearance, centre of wheelbase	m_2 (mm)	26
	4.33	Aisle width for pallets 1000X1200 crossways	A_{st} (mm)	2197
	4.34	Aisle width for pallets 800X1200 lengthways	A_{st} (mm)	2145
	4.35	Turning radius	W_a (mm)	1350
Performance data	5.1	Travel speed, laden/ unladen	Km/h	4.5 / 4.7
	5.2	Lift speed, laden/ unladen	m/s	0.12 / 0.19
	5.3	Lowering speed, laden/ unladen	m/s	0.13 / 0.11
	5.8	Max. gradeability, laden/ unladen	%	5 / 10
	5.10	Service brake		electromagnetic
Electric- engine	6.1	Drive motor rating S2 60min	kw	0.65
	6.2	Lift motor rating at S3 4.5%	kw	2.2
	6.3	Battery acc. to DIN 43531/35/36 A, B, C, no		no
	6.4	Battery voltage, nominal capacity K5	V/Ah	2 x 12 / 85 ¹⁾
	6.5	Battery weight +/-5%	kg	2 x 27
	6.6	Energy consumption acc: to VDI cycle	kWh/h	0.8
Additional data	8.1	Type of drive control		DC
	8.4	Sound level at driver's ear acc. to EN 12053	dB(A)	<70

1) others: 2x12/106, 24/60(Li)

NOBLELIFT

Mast table PSE 12B/PSE 12N

Designation	Lowered mast height h_1 (mm)	Free lift height h_2 (mm)	Lift height h_3 (mm)	Extended mast height h_4 (mm)	Lift + fork height $h_3 + h_{13}$ (mm)
Single-stage mast	1950	1514	1514	1950	1600
	2350	1914	1914	2350	2000
Two-stage mast	1930	-	2814	3337	2900
	2080	-	3114	3637	3200
	2280	-	3514	4037	3600